

Chapter 2

Connecting at New Paltz

Although many computer users subscribe to high-speed connections such as cable or DSL, SUNY New Paltz still provides internet access to currently registered students, faculty, and staff via “dial-up”. You must have a New Paltz Computer User ID (NPCUID) and an active phone line to use this service. Once you connect, you can use any web browser (Firefox, Internet Explorer) or email service you are familiar with.

Access Number

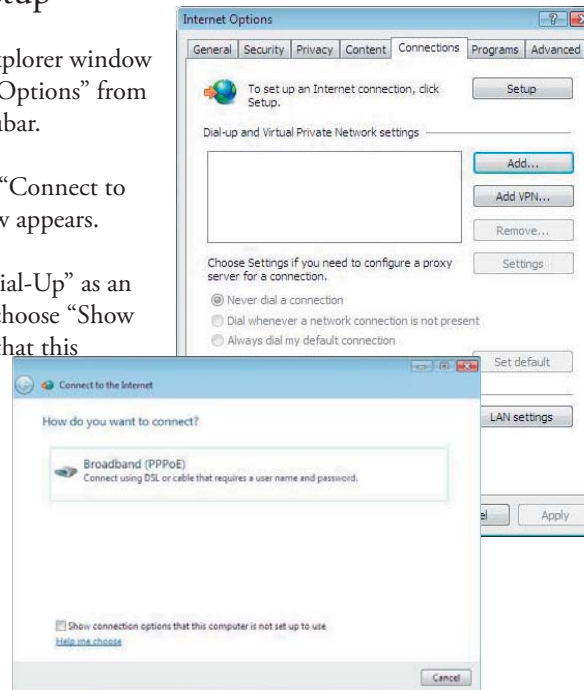
Phone #	Speed	Service	Data Setup
*(845) 257-3975	56/v.90	PPP	None-8-1

**Dial-up connections involve placing a phone call which your phone company may charge you for. Your phone company can tell you what charges (if any) calls to this phone number will cost you..*

There is no time limit on use, but this is a limited resource. We ask that you don't unnecessarily tie up connections.

Windows Vista Setup

1. Open an Internet Explorer window and select “Internet Options” from “Tools” on the menubar.
2. Click “Setup” and a “Connect to the Internet” window appears.
3. If you cannot see “Dial-Up” as an option, you should choose “Show connection options that this computer is not set up to use.”



4. Click “Dial-up.”
5. Click “Setup” and a “Connect to the Internet” window appears.
6. Enter a number from the list above, along with your NPCUID and password.

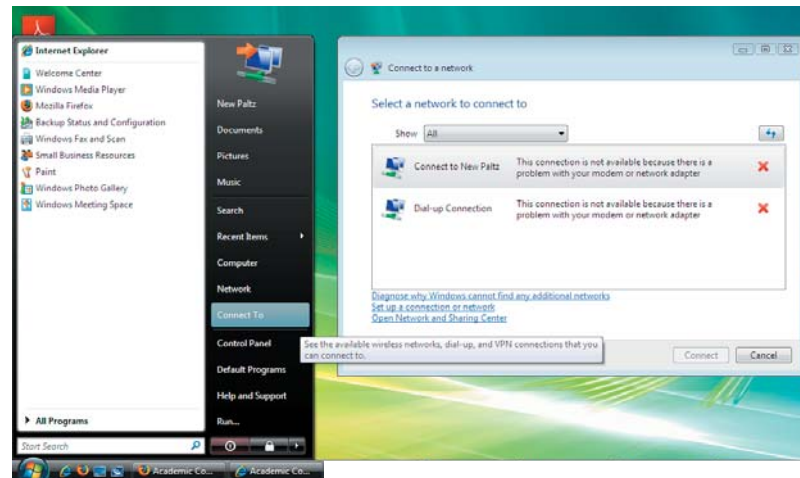


Give your connection a name.. and then click “Create”.

The set-up is complete.

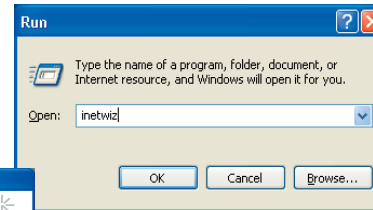
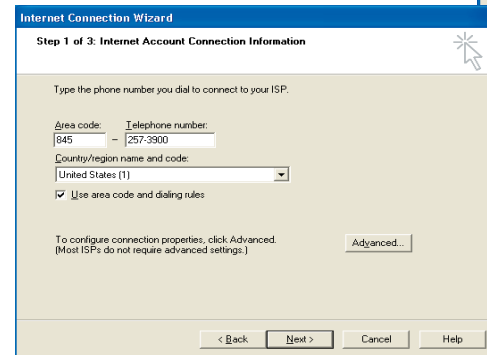


To use this connection click the Start button(lower left), “Connect to”, and then select the name you just entered (i.e. Connect to New Paltz) and hit “Connect”.



Windows 2000/XP Setup

1. Go to the *Start* button. Select *Run* and type *inetwiz*, as shown.
2. The Internet Connection Wizard dialog box is shown. Select *Connect using my Phone line*.

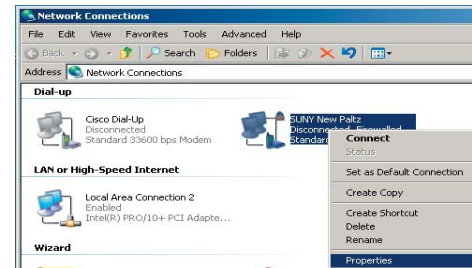


3. If your modem has already been installed, Windows will present the Step 1 of 3 Internet Account Connection Information screen. The top portion of this screen is shown at left. Insert the phone number to be dialed (you should use 257-3975), uncheck 'Use area code and dialing rules...' Click *Next*.
4. The Step 2 screen will ask for your npcuid and password. Enter your npcuid and password. The Step 3 screen will ask for a name for the connection. You may use SUNY New Paltz, SUNY, or whatever name you find convenient.
5. The next screen will ask if you wish to setup an internet mail account. Select the *NO* button. If you wish to set up your e-mail, please see *Chapter 3: Using E-mail*. Proceed to the next (and final) screen. Select *Finish* to complete the dial-up connection setup.

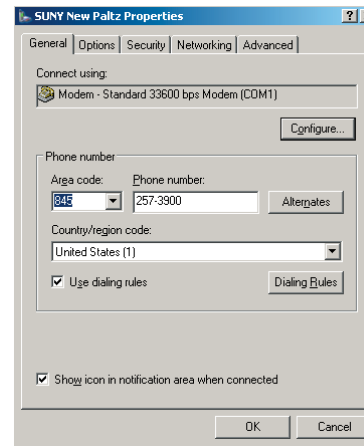
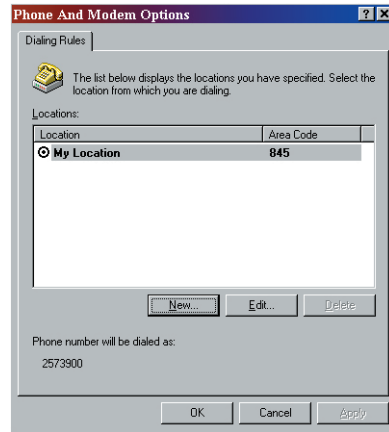
Windows 2000/XP: How to Set Up Dialing Rules

If you are using a laptop, you may wish to set up dialing rules to connect to New Paltz. This is useful if you sometimes bring your laptop to other area codes, from which New Paltz is a long distance call.

1. Go to the Start Menu and click on *Settings* and then *Control Panel*.
2. In Control Panel, find and open *Network and Dial-up Connections*.
3. Right click on your connection for SUNY New Paltz and go to *Properties*.

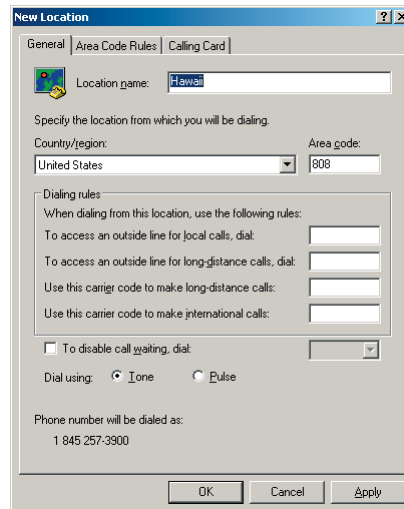


4. In the window that comes up, check in the box that says “Use Dialing Rules” and add the 845 area code for New Paltz into the “area code” box.
5. Click on the *Dialing Rules* button. You will get a window called “Phone and Modem Options.” You should already have a location defined called “My Location” which has an area code of 845. If it doesn’t, add it.



6. To add a location, click the New button.
7. Add a name for your location, and fill in the area code for that location. Add in any other settings that you need. Click *OK*.
8. The next time you click on the connection for SUNY New Paltz, you will see the connection window. Select your location in the “Dialing From” list. If that location has a different area code, the area code for New Paltz (845) will be dialed

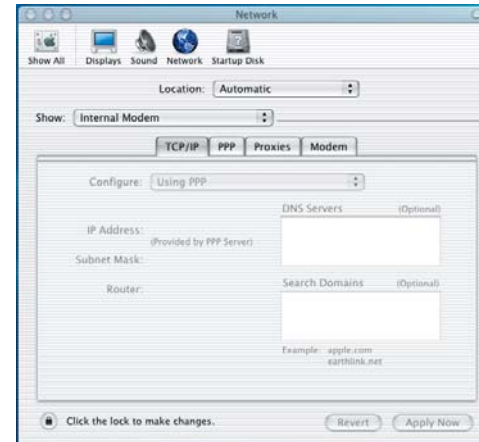
automatically. For example, if you were in Hawaii and chose Hawaii as your location, the dialer would automatically dial 845 before dialing 257-3900. Remember to set it back to “My Location” when you get back home.



Mac PPP (Dial-Up) Setup for OS X (10.2)

These instructions will take you through configuring your Mac to connect to the SUNY New Paltz dial-up service if you are using Mac OS X, v.10.2 or greater.

1. Open System Preferences. You can find this in either of two places. Click on the Apple at the top left of the menu bar, drag down to System Preferences, and release – or – scroll along the dock to the icon that looks like a light switch with the Apple, and click on that. The System Preferences window will open.
2. Under the Internet and Network section, double-click on the Network icon to bring up the Network window. If the window is “greyed out,” as shown, it means the window is locked and no changes can be made. You will have to unlock it first. If it is not “greyed out,” skip to step 4.
3. “*The Unlocking Step*” Click on the “closed lock” icon in the lower left and a new dialog box will open, requesting the administrator name and password. You will have to fill in the name and password you provided when you first set up your computer. Fill in the boxes and click OK.

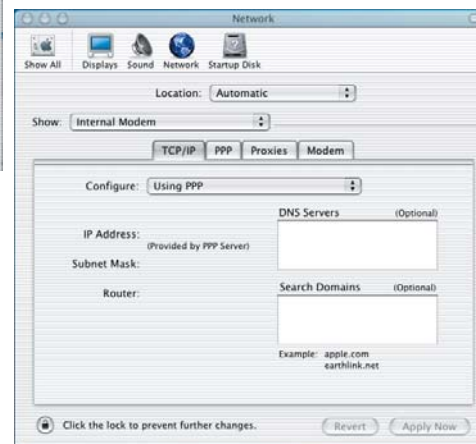


4. Select the TCP/IP tab in the Network window. Scroll on the Location bar, the Show bar and the Configure bar so that the choice in each is as illustrated below.

Location: Automatic

Show: Internal Modem
(unless you have an external modem)

Configure: Using PPP





5. Click on the PPP tab and fill in the information fields as follows:

Service Provider: New Paltz

Account Name: NPCUID

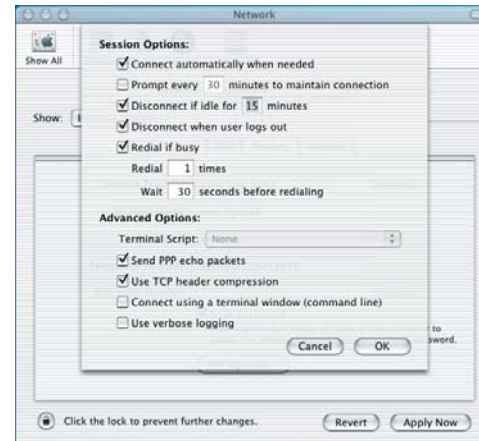
Password: your password

Telephone Number: 257-3975

In this example, "Save password" is checked. If you are concerned that others may have access to your computer when you're not around, un-check this box.

6. While still in the PPP tab, click on "PPP Options," located at the bottom of the PPP tab.

Note: Adjust the Session Options from the defaults as you would prefer. If you check the first Session Option, "Connect automatically when needed," whenever you launch a browser, the computer will automatically dial-up and connect for you. Advanced options can remain at the defaults. Click OK when you have made your choices. The drop-down will scroll up and you will be back on the PPP tab.



7. Click on the Modem tab. If you have other than an internal Apple modem, click on the arrow key at the end of the Modem bar and select your modem. Check the first two boxes (Enable error correction . . . and . . . Wait for dial tone . . .) Most phones use Tone for Dialing. Click on Tone. Select the other options as you wish.

8. When you are done click on "Apply Now" and close the Network window.

To Connect

If you didn't check "Connect Automatically When Needed" in PPP options, you will need to manually connect each time you wish to access the network or the internet. To do so, go to "Internet Connect." The file system path is as shown.

